

**NEW**

**MILETO**  
**ELECTROMAGNETIC LOCKS - SECURITY ON THE 1st LINE**



## NEW LOCK- MILETO

### Magnetic suction pad kit for glass door

## TRIVEL

We present the new electromagnetic lock MILETO, in our catalogue of novelties 2024.

MILETO increases the range of locks with this new serie of electromagnetic locks, that can be installed with our last generation ACCESS controls, available in different options: keyboard, card, fingerprint or facial recognition.

### MORE SECURITY

Allows the blocking/unblocking of the door by an electromagnet (frame) and an inducted sheet (door).  
Avoids the using of conventional keys.

### MORE COMFORT

Calm in your house or at work, knowing that the door is always closed.  
Quick installation.  
Can be installed in any type of door.

### MORE CONNECTIVITY

Compatible with our ACCESS control series.  
Last generation access controls, available in different options: keyboard, card, fingerprint or facial recognition.





## MILETO VMMT23

**Magnetic suction pad kit for glass door to frame or roof**

### GENERAL FEATURES:

Magnetic suction pad lock.

Manufactured in Stainless-Steel and anodized aluminium.

Retention strength of 80 kg.

Voltage 12/24 VDC

Consumption (12VDC) 310 mA

Consumption (24VDC) 170 mA

Inverted functioning.

For 10mm glass thickness.

Installation to the glass by pressure

(Recommended to silicone)

Satin standard finish.

### Electromagnetic compatibility:

Directive 2014/30/UE

According to regulations: EN 60730-1:2016 & EN IEC

60730-2-12:2019

### OPTIONS UNDER REQUEST:

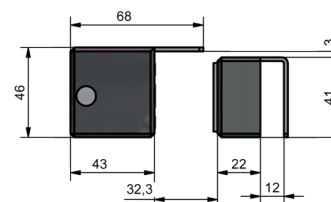
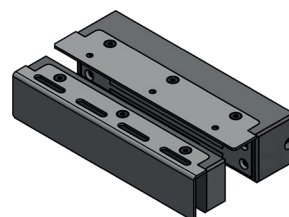
Different glass thicknesses.

Standard satin finish.

Other finishes to consult.

## NEW LOCK- MILETO

**Magnetic suction pad kit for glass door to frame or roof**



## MILETO VMM23

### Magnetic suction pad kit for glass door

#### GENERAL FEATURES:

Magnetic suction pad lock

Manufactured in Stainless-Steel and anodized aluminium

Satin standard finish

For 10mm glass thickness

(Other thicknesses under demand)

Installation to the glass by pressure

(Recommended to silicone)

Retention strength of 80 kg

Voltage 12/24 VDC

Consumption (12VDC) 310 mA

Consumption (24VDC) 170 mA

#### Electromagnetic compatibility:

Directive 2014/30/UE

According to regulations: EN 60730-1:2016 & EN IEC

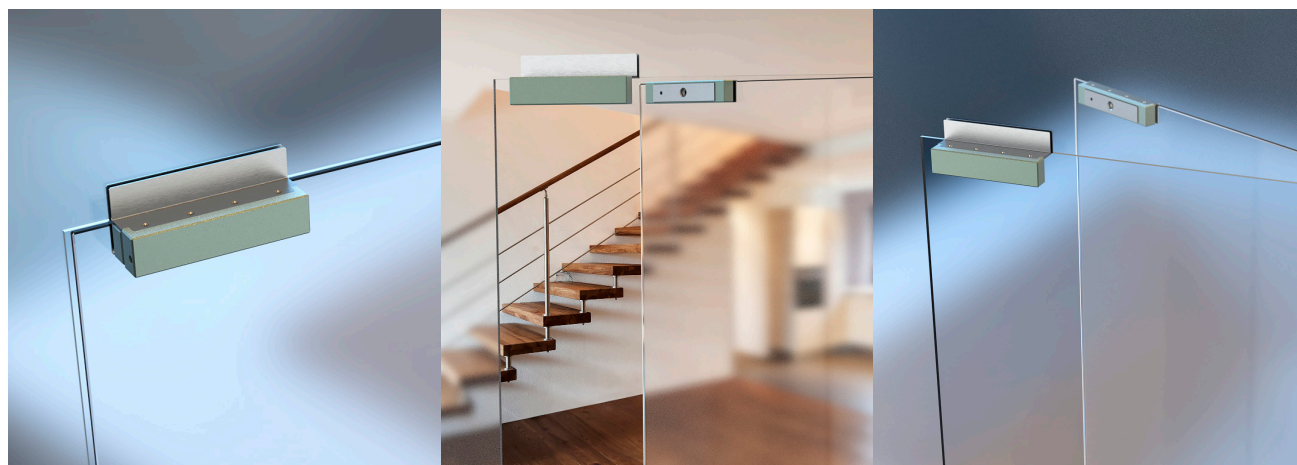
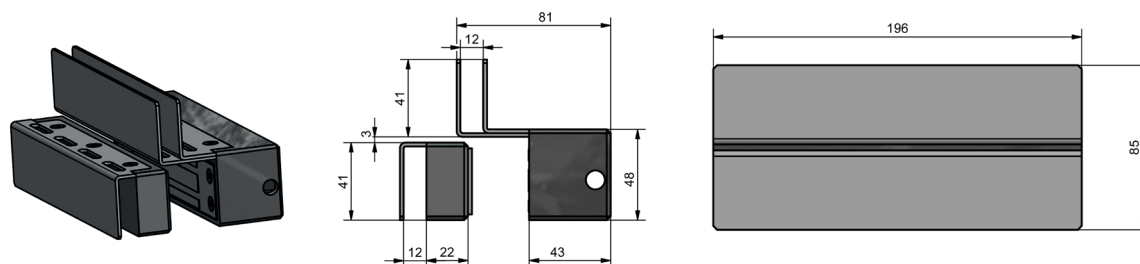
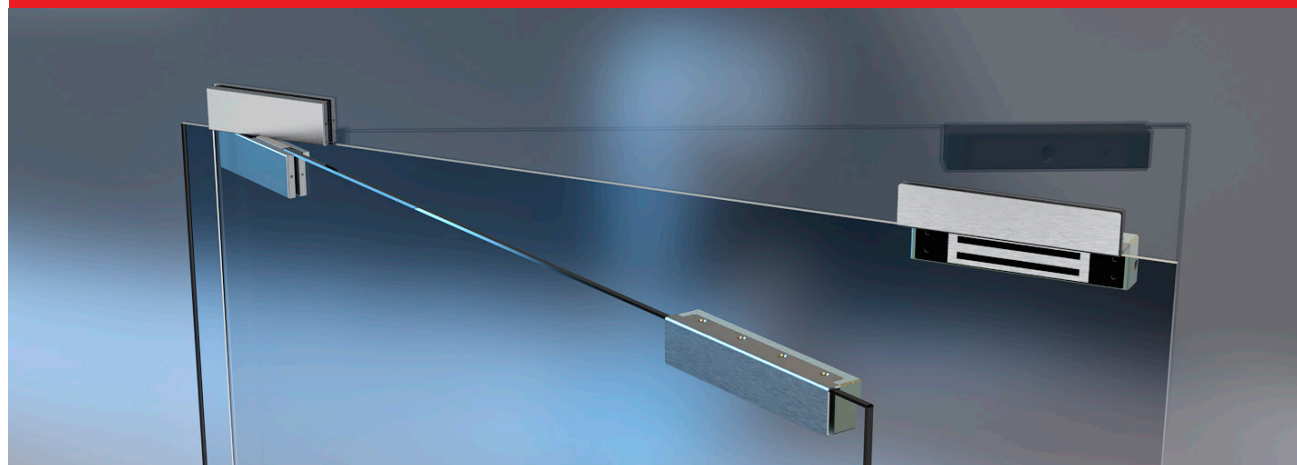
60730-2-12:2019

#### OPTIONS UNDER REQUEST:

Different glass thicknesses and other colours or special finishes

## NEW LOCK- MILETO

### Magnetic suction pad kit for glass door







**TRIVEL**<sup>®</sup>  
EXPERIENCE MAKES US BETTER

**DESIGN, INNOVATION  
AND MORE THAN 75 YEARS OF EXPERIENCE, MANUFACTURING:**

Hinges – Fittings – Locks – Strike boxes – Inaltronic wireless – Closing Doors – Access controls  
Handles – Pull handles – Anti-panic systems – Plinths – Canopies – Fittings for carpentry