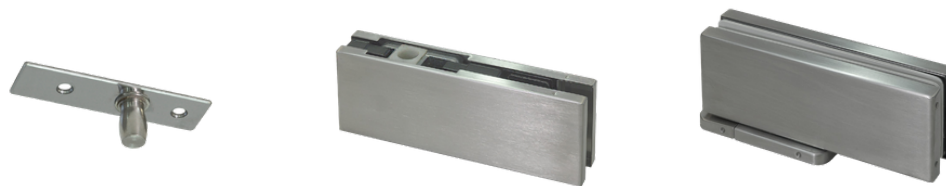


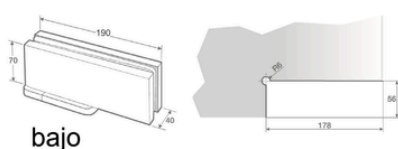
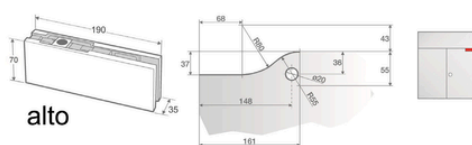
# PERNIOS HIDRÁULICOS TRIVEL

## FICHA COMPARATIVA

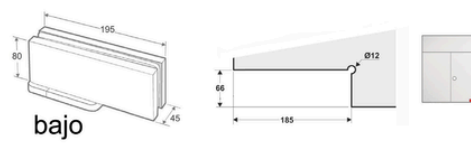
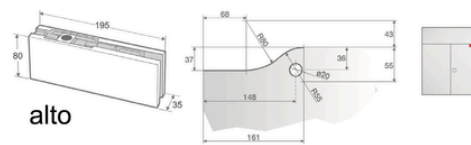


ITEM No.		<b>G100</b>	<b>G100E</b>	<b>G100 MINI</b>
<b>Dimensiones (mm)</b> Dimensions (mm)	<b>Largo   Length</b>	190	195	160
	<b>Alto   Height</b>	70	80	47
	<b>Ancho   Width</b>	40	45	32
<b>Ancho máx. de puerta   Max. Door width</b>		1000mm	1250mm	850mm
<b>Peso máximo recomendado   Max. Door Weight</b>		100Kg.	115Kg.	60Kg.
<b>Espesores de vidrio   Glass Thickness</b>		8-13mm	10-15mm	8-13mm
<b>Angulo de apertura   Angle of Openin</b>		150°	150°	150°
<b>Velocidad de aprox. ajustable   Closing speed adjustable</b>		✓	✓	✓
<b>Velocidad de cierre ajustable   Braking speed closing</b>		✓	✓	✓
<b>Reversible   Non Handed</b>		✓	✓	✓
<b>Fuerza mínima de Cierre   Minimum Closing Force</b>		22,5 N	49 N	11,5 N
<b>Temp. Ambiente de trabajo   Working Temp. Range</b>		-20°C to 50°C	-20°C to 50°C	-20°C to 50°C
<b>Certificado   Certified UNE-EN 1154:2003/AC 2006</b>		Grade 8 - 500.000 cycles	Grade 8 - 500.000 cycles	Grade 8 - 500.000 cycles
<b>Certificado   Certified UNE-EN 1670:2007-Anticorrosion</b>		Grade 3	Grade 3	Grade 3
<b>Rapida y Sencilla instalación   Quick and Easy Installation</b>		✓	✓	✓

### G100



### G100E



### G100 MINI

